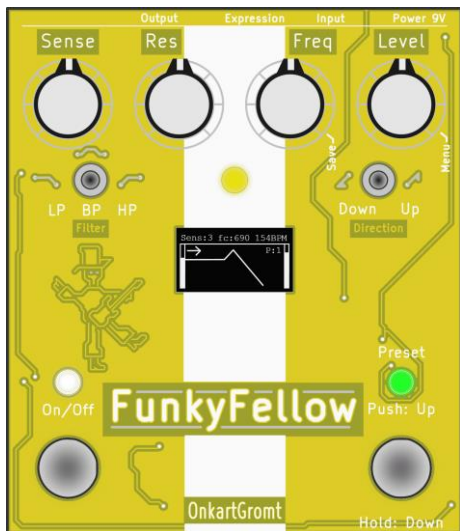


# FunkyFellow™



Envelope filter for bass

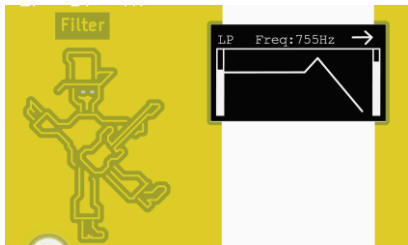
## CONTENTS

Overview .....	3
Sense .....	4
Resonance .....	4
Frequency .....	5
Level .....	6
Menu/Modulation .....	6
Bypass mode .....	7
Presets .....	9
Default Presets .....	10
Hints and tricks .....	11
Technical specs .....	11

## OVERVIEW

FunkyFellow was designed to be an advanced envelope filter effect. User friendly (as it shows how the filter moves), fun and funky. This guy has a lot of options and will give you hours of joy.

Because of all the options, there is a real risk that you forget how you got that funky sound you had last gig.

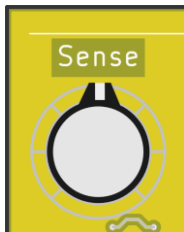


That's why we also put in 5 presets that can be accessed with the foot during a gig. Of course, you can change the presets to your own taste.

One special thing about this fellow, is the ability to add some modulation to the envelope.

## SENSE

Sense(sensitivity) controls how much the filter will move dependent on the amplitude of the signal. If you set it to 1, the filter will stand still and the higher the Sense, the more the filter will move the direction set.



If the expression pedal input is active, this control will change. Then the mid position is 0 and you can set it either negative CCW (the expression pedal will move the filter down) or if you turn it CW the expression pedal will move the filter up.

## RESONANCE

Resonance is how much gain it will be at the set frequency. The more resonance, the “quirkier” sound you will get. But remember that you might run into distortion if the levels get to high.

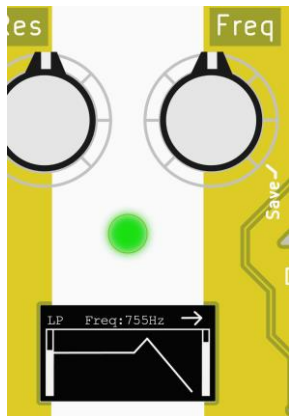


The resonance (Q value) can be set from 1.2 to 4

## FREQUENCY

This knob adjusts the resonant frequency of the filters. That means highest point in the frequency spectrum on the screen.

As the filter moves back and forth around a certain frequency, you can get a lot of different sounds and variations dependent of the input signal.



## LEVEL

As the filter effects the overall loudness of the audio signal, it is sometimes needed to adjust the output level. It can be adjusted from -6dB to +6dB



## MENU/MODULATION

By pushing the 'Level' knob, you will activate the Modulation Mode

To adjust the Modulation Speed, turn the same knob.

To disable the modulation mode, just click the button once more.

If you load a preset with the modulation mode set, it will automatically change the function of the right footswitch to be used as a Tap Tempo.

## BYPASS MODE

FunkyFellow has signal relays inside that will always bypass the signal when powered off. It is possible to choose between using the True bypass mode or buffered bypass mode.

We will not list up the pros and cons between them. Too much is already written about that subject.

But there is one important thing to be aware of in the case when it comes to the FunkyFellow. The -10dB pad is inserted after the relays. That means if you use True Bypass mode and the -10dB pad, you will get 10dB louder signal when it is turned off.

If you use buffered bypass, it will be the same level.

If you don't need to use the -10dB pad, there is no difference in the level between the modes.

The -10dB switch is inside the box and can be accessed through the hole on the left side of the box. Use a small screwdriver to push it.

The setup for this option can be accessed by holding both foot switches down when power is applied. Continue to hold the footswitches while the settings can be changed with the toggle switches.

In this window it is also possible to reset FunkyFellow to the default factory settings.



## PRESETS

FunkyFellow has room for 5 presets. They can be loaded by navigating to the number you want to by push the right footswitch.

If you hold the footswitch, you will load the previous preset.

When the modulation mode is active, the Preset footswitch is used as a tap tempo. Then you need to hold the footswitch and you will go to the previous preset.

Preset 1: Blue LED

Preset 2: White LED

Preset 3: Yellow LED

Preset 4: Green LED

Preset 5: Red LED

To save a preset, just push the 'Freq' knob until the screen displays 'SAVED'. (1 sec)

## DEFAULT PRESETS

The 5 presets that is stored by default gives you a good starting point for several user cases.

1. "Starting point"; a real funky start. Not too much sensitivity and gives the edge around 550Hz. Nice too add some extra spice to the dinner.
2. "Rumbled", LP filter with direction set Down. This will cut off the treble when the signal is strong.
3. "Shaky", modulation active and a classic LP mode with direction Up.
4. "No lows", BP filter reducing the bass and only giving some funk in the mid-range.
5. "Expressionist", good for connecting an expression pedal acting as a wah-wah variant.

## HINTS AND TRICKS

- Be careful when using the Down direction of the envelope. Combined with a low frequency, you can get rather nasty sounds out of the box. Most of the signal energy is in the lowest frequencies of a bass guitar. When the resonant filter hits the fundamental frequencies, you will end up with a very high signal that can rumble the PA too much.

## TECHNICAL SPECS

Technology: Digital 32 bit/96kHz, FPU

Maximum input level: +14dBu with pad,  
+4dBu without

Noise floor: -98dBm

Input impedance: 1Mohm

Output impedance: 1kOhm

S/N ratio: 104dB

Adjustable filter frequency: 150- 2000Hz

Resonance(Q): 1,2 - 4

Gain adjustment: -6dB - +6dB

Filters: Lowpass, Bandpass or Highpass

Expression pedal: Automatically detected.  
TRS type.

Modulation speed: 30 – 300 bpm

-

Copyright OnkartGromt™ 2019. All rights reserved.